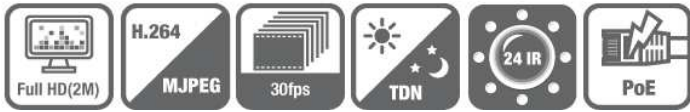


➤ 2M Entry-Level IR Vandal-dome

FW7502-FC



Key Features

1/2.7" 2.13M PS CMOS Sensor

3.6mm(F1.8) Fixed Lens

Min. Illumination: 0 Lux (IR)

Max. 30fps@2M(1920x1080)

Dual Stream(H.264, MJPEG)

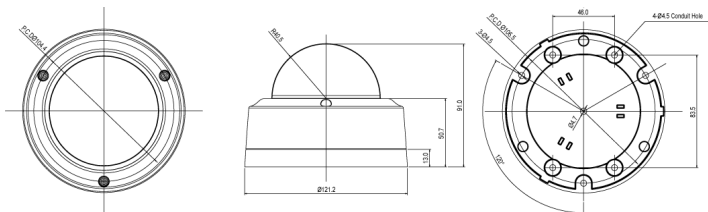
24 IR LED
Built-in PoE
Micro SD slot

Supports both ONVIF(ProfileS) and PSIA(v1.0) standards.

Video Encoding	H.264/MJPEG (simultaneous dual stream) H.264/H.264 (true H.264 dual streaming) Simultaneous streaming with independent control
Video signal	N/A
Resolution	1920x1080, 1280x720, 640x352, 320x176, 160x96
Live Casting	Streaming video channels Up to max 30fps @ 2M when simplex
Audio Encoding	N/A
Audio channels	N/A
PTZ support	N/A
Serial Interface	Console, By-pass command to control UART device Serial Input/Output mode (3.3V TTL)
Bandwidth Management	Frame rate control / Bandwidth control / CBR / VBR [Trigger Condition] Video loss / Video recovered / Motion detection (144 area) / Boot finished / Schedule
Alarm Management	[Alarm Service] Image holding service (Max 5.6MByte pre-post alarm buffer), Image upload service through E-mail / FTP (support pre & post), Notification service through TCP / UDP / HTTP
Security	Channel based user password protection for live-cast, PTZ, alarm output and audio
Dynamic IP	Dynamic IP service using www.ipcctvdns.com
Smart Solution	Smart Phone Application (IOS, Android)
Web interface	Live-cast, PTZ control, search through Web browser Minimum PC requirement - Windows XP Pro (IE 6.x or later) , Pentium4 (2Ghz, 2G RAM), Video Card(256MB RAM, 1024x768)
Management Software	Supports 16, 32, 64, 128ch Management Software Full-featured PC NVR with matrix functionality
System Integration	[Protocol] HTTP, RTP/RTSP(Unicast/Multicast), TCP/IP(V4/V6), UDP, FTP, Telnet, HTTPS, RARP, PPPoE, SNMP, PAP, CHAP, DHCP, NTP, SMTP client, uPNP and etc [SDK] Open HTTP API / ActiveX for live cast with audio & PTZ [Service] Image upload / notification / POS integration

Installation & maintenance	Configuration by installation wizard, HTTP, telnet and console. Upgrade firmware through HTTP, telnet & FTP
Misc.	Transmit serial input data with video Quick Time & VLC media player compatible
System hardware	32bit Embedded CPU / Embedded Linux / 128MByte SDRAM / 128MByte NAND Flash
Power	Power Supply - SMPS 12V/1A [AC100~240V, 50/60Hz] Max. Power Consumption - DC12V, 4.8W Built-in PoE (IEEE 802.3af)
Approvals	IP66, KC, FCC, CE, RoHS
Dimension / Weight	81Ø x 121.2(L) x 91(H) (in mm) About 515g without Power Supply
External Interface	10/100-Base-T Ethernet (auto-sensing) 1 DI/DO(3.3V TTL) 1 UART port(3.3V TTL) Factory Default Button
Working Environment	Temperature: -10~50 °C, Humidity: 10~90% RH
Image sensor	1/2.7" progressive scan CMOS Total number of pixels: 1952H×1092V=2.13M Pixel size : 3 (H) µm × 3 (V) µm Color filter Bayer arrangement of primary colors: R, G, B Bit number of internal ADC: 10 bits Parallel output: 40 MHz, 10 bits Maximum frame rate in all-pixel scan mode: 60/30 fps
Lens	3.6mm, fixed, F1.8 Day & Night (Auto/B&W/Off) Auto White Balance Noise Filter (Off/On)
Image Setting	Brightness/Contrast/Sharpness/AGC Gain Control Shutter (Manual/Auto) Vertical/Horizontal Flip Sens Up Level Frequency Control (50/60)
Minimum illumination	0 Lux (IR)
Options	

Dimensions



Accessory



www.asd.co.th